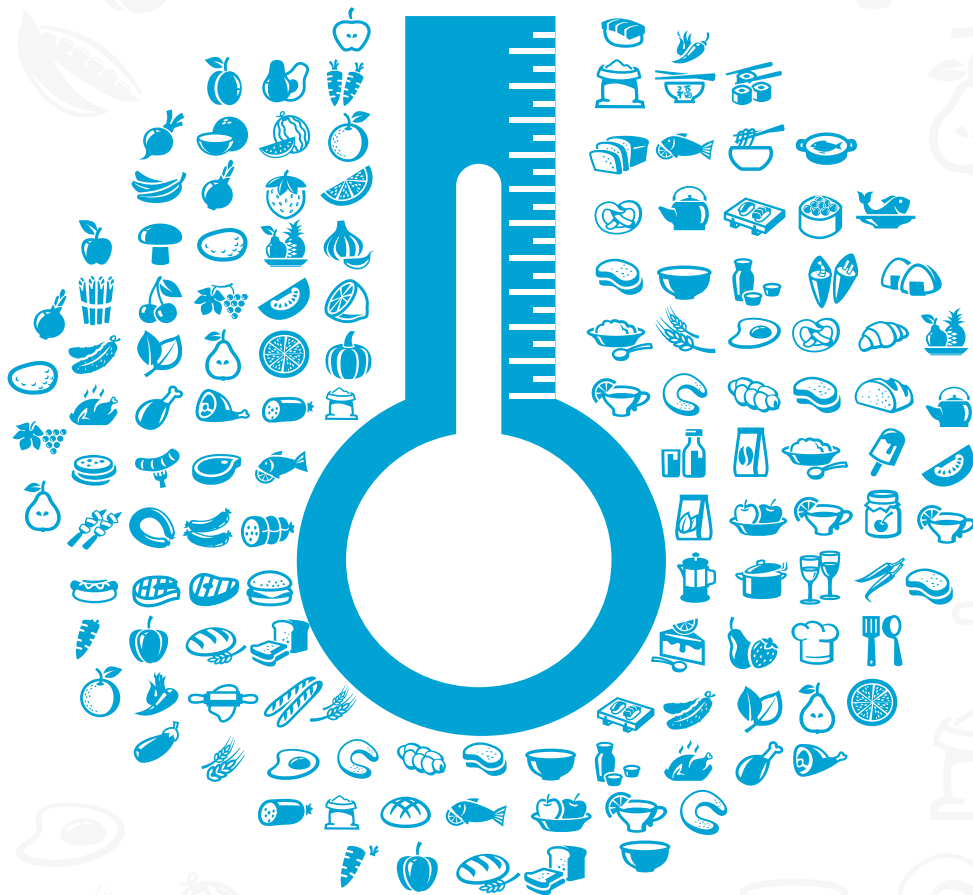




*Supply Chain  
Solutions*

# ***FLOURISH YOUR BUSINESS***



**WE ANALYZE, OPTIMIZE,  
FORMULIZE, INTERNALIZE, SYNCHRONIZE,  
YOU CAPITALIZE**

**COLD CHAIN**



# Group Profile

## Vision

TCI Group should be a **Customer Oriented, Multi Technology, Multi Specialist** transport system in the Indian and International markets, with a **proven commitment to excellence** in every facet of activity and **pursuit of value based policies to satisfy aspirations** of society, customers, vendors, employees, shareholders and the transport industry.

## Group Credibility

- Incorporated in 1958, as a "One Man, One Truck, One Office" company, now India's Leading integrated supply chain and logistics solutions provider.
- Extensive own infrastructure of 1000+ real time ERP enabled offices, modern warehouses of over 11 million sq.ft covered area with 6000+ strong workforce.
- TCI takes pride in being a good corporate citizen by adhering to good corporate governance practices and undertakes social economic welfare activities under the aegis of TCI Foundation.



## Values that drive the Company



### Customer Focus

For the customer with the customer



### Ownership

To work with the passion of an entrepreneur, be self motivated & take pride of belonging with the company



### Responsiveness

To make customer responsiveness our core competency and align all aspects of business to deliver our best



### Empathy

To incorporate emotional intelligence into our day to day operations & create an enabling work environment ruled by respect for one and all

## Single Window Solutions

It is with the amalgamation of many complimenting forces that a complete solution emerges. Group TCI has moved seamlessly internally within its divisions and externally across boundaries to serve business among various industry verticals by being an intrinsic part of the customer's logistics process.

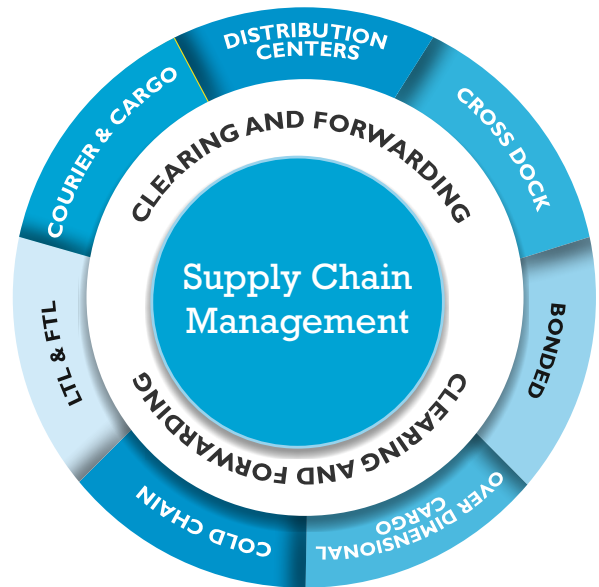


## Mission

- To be the **Most Admired** service provider of Integrated Supply Chain Solutions.
- To **Deliver Value** to our customers and stakeholders by adopting best practices and continuous innovation.

## Supply Chain Management : Conceptualisation To Execution

- TCI SCS brings in a lot of commitment in its partnership with its clients. Being in a mission critical service industry, we design system and processes around your wish-list and monitor operations to the last detail in ensuring an agile and lean supply chain for you.
- Operating in the value space, SCS has a rich talent pool for key industry verticals to provided tailor made Solutions
  - Dynamic Supply Chain Network Design.
  - Supply Chain Execution : As a Lead Logistics Provider ( 3PL / 4PL )



## Consultancy

With successful case studies of Network Design and Supply Chain Re-engineering across various industries, TCI SCS is well equipped to offer the best solution for your supply chain.

With complex supply chains yet abbreviated product life cycle, network re-design post GST:- Companies need to drive change smartly and efficiently. Our consulting service can help you achieve the same through its bouquet of services that ranges from:

- Supply Chain Strategy Design
- Inventory Planning, Management and Reduction
- Distribution Network Modeling and Optimization
- Warehouse / DC Design

These services are provided by the team of supply chain experts with sound knowledge of Global Best Practice along with understanding of local conditions.

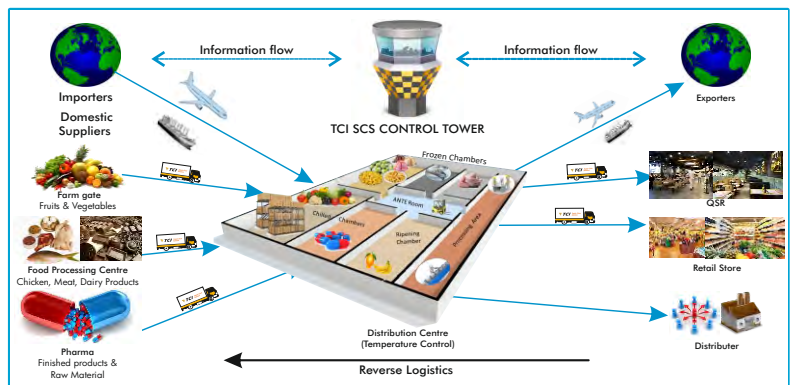


# “Flourish”

## Your Business with TCI Supply Chain Solutions’

### Emerging Trends in Cold-Chain Industry

- Temperature controlled supply chain is integral to changing global economy today, witnessing increasing demand of quality supply chain management for fresh agricultural products, processed food, life sciences, health care & specialty chemicals.
- Compliance to FSSAI (Food Safety and Standards Authority of India) FDA (Food and Drug Administration) besides other regulation norms like NBC (National Building Code) for warehouses and CMVR regulation (Central Motor Vehicles Rule) for fleet need a supply chain with high corporate governance standards.



- TCI Supply Chain Solutions offers such integrated cold chain services to meet temperature control Warehousing, Primary & Secondary distribution requirements for varied industries from QSR to Retail to Life sciences & Health care.

### TCI Cold Chain Network

- Expanding and complementing cold chain service of existing Reefer fleet by a network of temperature controlled warehouses.
- The State of art Multi-user and multi-temperature facilities will enable seamless flow through the supply chain.
- Partnering high value added segment of QSR, Retail and Life sciences in their quest for quality Pan India services.



## Cold Chain Warehouse Management

- 11 Million Plus Sq.ft of ambient warehousing Space.
- 5400 multi-temperature pallet positions warehouse at NCR.
- Upcoming 7000 pallet positions cold-chain warehouse all over India.
- Modern Infrastructure based on global building standards.
- Blast freezer for quick cooling of food/processed products upto  $-40^{\circ}\text{C}$ .
- Humidity control for Life Sciences & healthcare products between 35-65% RH.



Order Management



Monitoring/Control Panel



Soft Processing



State of art WMS



RF HHT



Road Permit Mgmt.

## Distribution



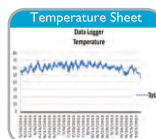
- Temperature Controlled Transportation
- Refrigerated Vehicles with Payload ranging from 1 ton to 18 ton
- Imported Units with Digital Data Logger, 40 kg /m<sup>3</sup> density PUF with 100-120 mm thickness, Stainless Steel Panels.
- GPS tracking with Online Temperature Visibility.
- Central Control Tower for qualitative services



Reffer Unit



Data Logga



Temperature Sheet



Strip Curtains at Door

## Sub Verticals in Cold- Chain Logistics



Fruits & Vegetables



Health- care



QSR



Chocolates



Dairy



Marine & Meat



Speciality

# Core Competencies



The core values offered by TCI Supply Chain Solutions are operating on shorter product life cycles, scientifically and professionally managed inventory, supplemented with state-of-the-art material handling equipment warehousing and multi-modal transportation. And also managing and integrating the flow of information amongst hundreds of outsourced supply chain partners and the enterprises that employ them.

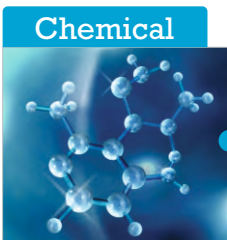
## Key Industries



- Network Design
- Vendor to DC / Store platform and logistics
- Distribution Centre Design, Management,
- Value Added Services : QC, kitting, packaging
- Distribution - Milk Run, B to C, Collection on Delivery
- Reverse Logistics & Processing

### Adherence to Statutory Health Safety & Environment Practices

- Solids, Liquids, Gases
- Production Logistics
- Raw Material Stores, QC, Silo Charging
- Finished goods store & Value Added Services
- Freight Desk, Transportation
- EXIM Services : Bonded warehousing, Custom Clearance



### Design to Execution:

- Production Logistics, Returnable Management, Kitting and Line Feeding
- CBU Logistics, Multi-modal Logistics, Yard Management
- Aftermarket Logistics & Distribution Center
- Parts Consolidation Center (PCC) for EXIM



### Consumer Products:

- Production Logistic, Kitting and Line Feeding
- Distribution for B- B & B-C over surface & air
- Distribution Center Management
- Aftermarket & Reverse Logistics

### Projects & Equipment

- Site logistics Plan & Execution
- Yard / Distribution Center Management
- Reverse Logistics



- State of the art Reefer vehicles
- Temperature view over GPS
- City Delivery & Cross Country
- Emerging Cold Room network



### Pharma & Health Care

#### Ambient & Cold Chain

- Distribution Center Management
- Surface & air transportation
- 24 hour Track & Trace
- Advanced monitoring of Temperature sensitive shipments.

## 5 Key Reasons to Prefer TCI Supply Chain Solutions

- Partnership Approach for growing your business
- Focus on corporate core competence
- Improve operational efficiency and productivity
- Improve customer service
- Cycle time reduction

# Lead Logistics Provider 3PL / 4PL

## Production Logistics: (Supplier / Port of Entry or Exit to Plant):

- Just-In-Time (JIT)/ Just-In-Sequence (JIS)/ Vendor/ Co-Managed Inventory (VMI/ CMI)
- Inplant Stores and Finished Goods Warehouse / Yard Management.

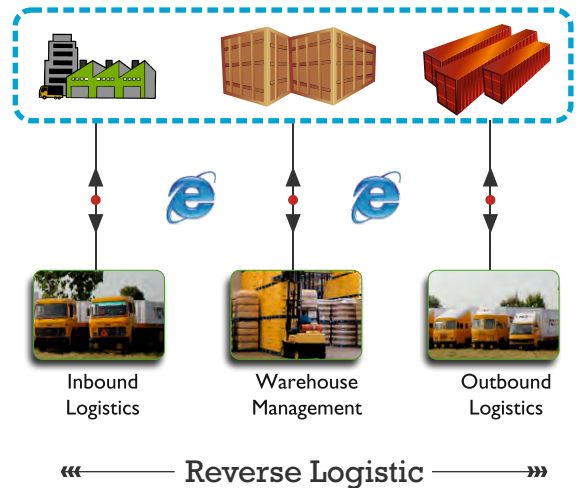
## Finished Goods Logistics (Outbound from Plant / Port of Entry) / Freight Desk Management:

- Demand Chain Management from Production/ Trading to Customer.
- Multi-Modal and Specialised Logistics Solutions.
- Consolidation of Carriers under a 24x7 Operation Control Tower.

## Warehousing / Distribution Centre Management:

- Modern high-rise Warehouses equipped with WMS and RF enabled HHT for efficient throughput.
- Import / Export Custom and Excise bonded warehouse.
- Value Added Services from kitting to Light Assembly.

## Collaborative Supply Chain Execution



## Key Account Management (KAM)

TCI SCS is a Customer Facing organization delivering on the SLA's (Service Level Agreement) by measurable KPI's (Key Performance Indicators).

The KAM Team operates like a Control Tower and manages information flow among suppliers, customers and intermediaries.

This process enables continuous control on exceptions and abnormalities.

Continuous improvement leading higher level of efficiencies at lower cost through:

- Kaizen and Quality Circle initiatives
- Elimination of MUDA in the chain

Typically the team operates as an extension of the client and echo's end user needs as an intrinsic part of the client's supply chain.

## Distinctive KPI's

### Warehousing

- OTIF (One Time In Full)
- Inventory Accuracy
- On time Delivery
- FMFO / FMFE / FIFO Hygiene
- Safety & Hygiene

### Production / Inbound Logistics

- Window Time Adherence
- Transit Time
- Alerts and Alarms
- Safety

### Finished Goods / Outbound Logistics

- Order to Asset deployment
- On Time Delivery
- Safe Delivery

# AWARDS AND ACCOLADES

**“Manufacturing Supply Chain Service Provider of the Year – Overall”**

Presented By  
Kamikaze B2B Media  
Consecutively from  
2014 to 2017

**“Best Warehouse Management”**

Presented By  
Indian Chamber of Commerce  
Year 2016

**“Effective Retail Through Supply Chain Award”**

Presented By  
Asia Retail Congress  
Consecutively from  
2011 to 2017

**“Domestic Logistics Services Company of the Year”**

Presented By  
Frost & Sullivan  
Year 2015

**“Manufacturing 3PL Service Provider of The Year”**

Presented By  
Kamikaze B2B Media  
Year 2014

**“Fleet Owner of The Year in The Automotive Segment”**

Presented By  
Mahindra  
Year 2013

**“Supply Chain Innovation of the Year for E-Commerce”**

Presented By  
Kamikaze B2B Media  
Year 2015

**“Company of The Year”**

Presented By  
Express Logistics & Supply Chain Conclave  
Year 2013



A division of Transport Corporation of India Ltd.

TCI House, 69 Institutional Area, Sector - 32, Gurugram - 122 001, Haryana, India.

Tel: +91-124-2381603 | Fax: +91-124-2384085, Email: [cc.mktg@tciscs.com](mailto:cc.mktg@tciscs.com) | Website: [www.tciscs.com](http://www.tciscs.com)